



- 1 **CHROMATIC SCALE** - Starting on **any** preferred pitch, articulated on the way up, slurred on the way down. It is highly preferable for you to perform **two** octaves if possible.
- 2 **SCALES** - Play at least two scales **with** arpeggios (any major and/or minor scales are acceptable), articulated on the way up, and slurred on the way down. At least one scale should be two octaves. Please announce your scales before performing them.

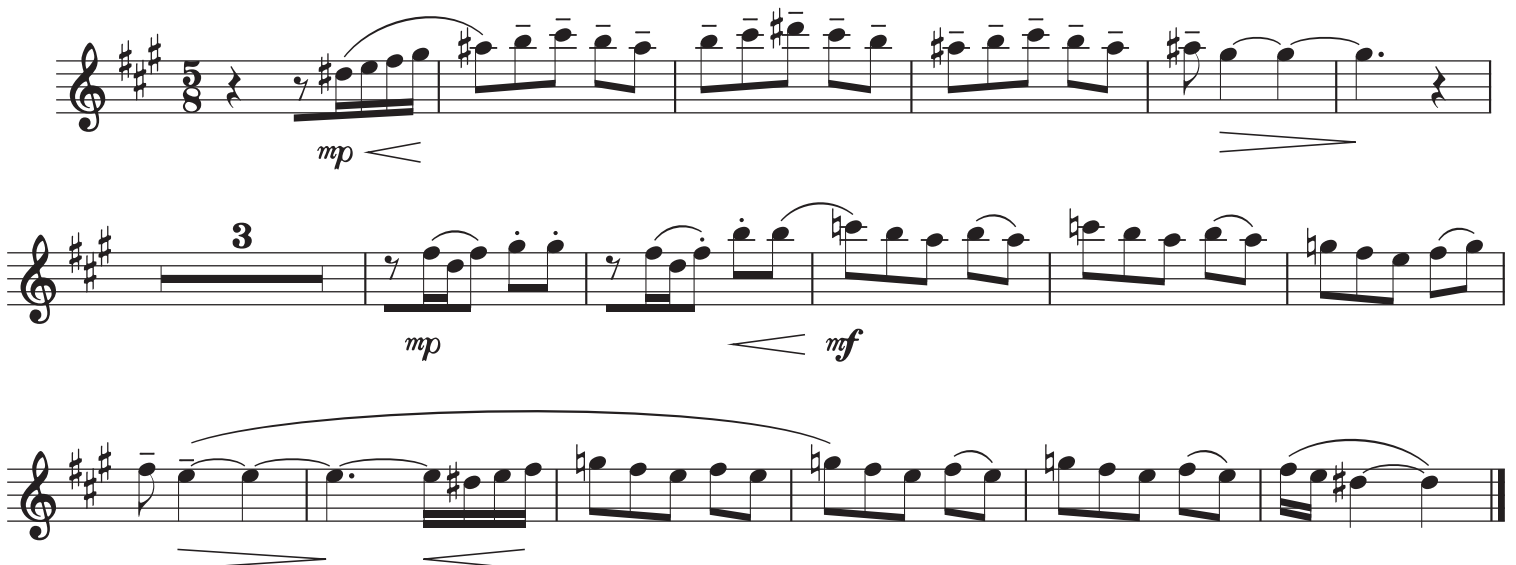
- 3 **INTERPRETATION** - Create an interpretation of the excerpt below that represents your most mature musicianship, including choices such as tempo, articulations, dynamics, phrasing, etc.

Longford Legend, Mvmt. II - Robert Sheldon [Audio: ~0:10 mark on most recordings]



- 4 **EXCERPTS** - Play any **ONE** of the following three excerpts. You may perform more of the excerpts if you wish, but it is not required for audition purposes.

Armenian Dances, Part I - Alfred Reed [Audio: ~5:00 mark on most recordings]



2026 Tri-State Band Symposium Audition Music - Saxophones

The Royal Welch Fusiliers - John Philip Sousa

$\text{♩} = 120$

ff

musical score for saxophones, 2/2 time signature, key of D major. The score consists of four staves. The first staff begins with a forte (ff) dynamic. The music features various melodic lines, rests, and articulation marks such as accents (^) and slurs. A crescendo hairpin is visible in the second staff.

Southern Harmony, Mvmt. I - Donald Grantham [Audio: ~1:15 mark on most recordings]

$\text{♩} = \text{c. } 132$

f

sfz mf

f

tr

tr

tr

tr

3 3 3 3

ff

musical score for saxophones, 4/4 time signature, key of Bb major. The score consists of four staves. The first staff begins with a forte (f) dynamic. The music includes various melodic lines, rests, and articulation marks such as accents (^), slurs, and trills (tr). Dynamics include sfz, mf, and ff. A crescendo hairpin is present in the second staff, and a decrescendo hairpin is in the third staff. The fourth staff features a triplet of eighth notes.